



Model No. **SW10242-GGS**

24 Port Gigabit 10/100/1000Mbps 2 Port 1G SFP+ Unmanaged Ethernet Switch

Enjoy the vivid World!



CE
Certification



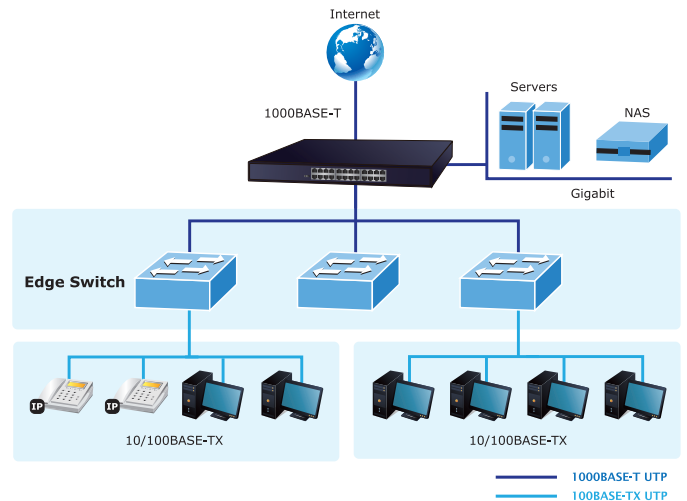
Plug & Play
Feature

PRODUCT DESCRIPTION

Featuring 24* 10/100/1000Mbps ports and 2 Gigabit SFP ports. Gigabit Ethernet Switch provides 24 RJ45 10/100/1000Mbps ports for high-speed network connectivity. It can automatically identify and determine the correct transmission speed and half/full duplex mode of the attached devices with its 24 Gigabit ports that support 9K jumbo frame feature. Therefore, the can handle extremely large amounts of data transmission in a secure topology linking to a backbone or high-power servers.

Key Features

- Provide 24*10/100/1000Mbps
- 2 Gigabit SFP ports
- Self-adaption: RJ45 port supports 10/100/1000Mbps Auto MDI/MDIX
- Wide Application: Designed for Wifi AP, IP Security camera and VoIP etc
- Surge protection: Protect the device from lighting surges and others electrical hazards
- Considerate Design: Rack mount installation with fanless design
- Easy to use: Plug and play, No configuration required



High Performance

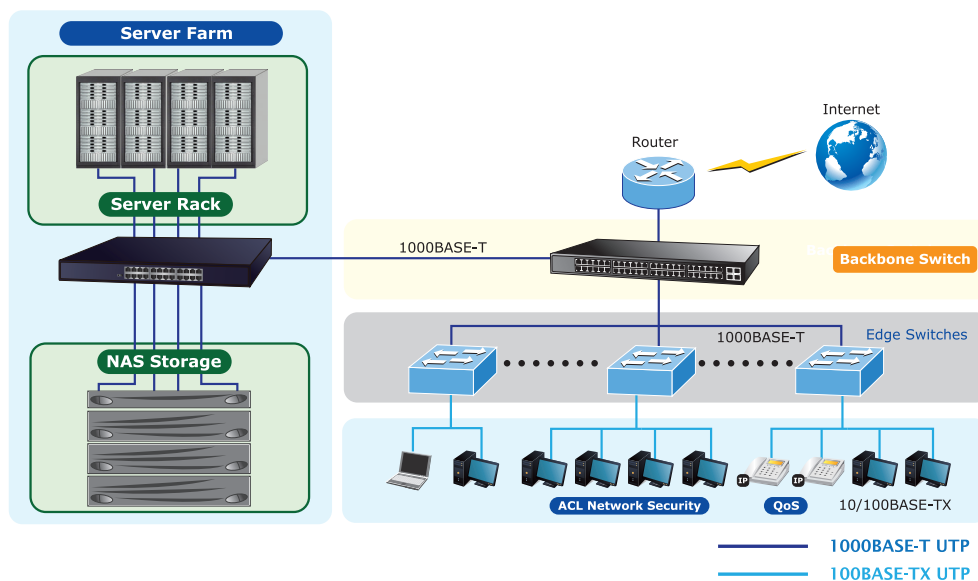
The SW10242-GGS provides a high-performance switch architecture that is capable of providing the non-blocking switch fabric and wire-speed throughput as high as 56Gbps, which greatly simplifies the tasks of upgrading the LAN for catering to increasing bandwidth demands.

Surge Protection Design

Reaching 3KV surge protection, the ports owns the capacity to keep the switches from lightning strikes and other electrical surges, offering reliable performance even in some harsh environments.

2 Gigabit SFP Uplink Port

With 2 SFP module slot available, the SFP uplink port is ideal for connecting the switch to the network's backbone, providing more than enough bandwidth and stability for ultra high speed data transferring. Beside the SFP can transmittes the date with more economic solution



TECHNICAL SPECIFICATIONS

Model	SW10242-GGS
Fixed Port	24* 10/100/1000Base-TX RJ45 port (Data)
	2* 1000M SFP
Network Protocol	IEEE802.3
	IEEE802.3i 10BASE-T
	IEEE802.3u 100BASE-TX
	IEEE802.3ab 1000BASE-T
	IEEE802.3z 1000BASE-X
	IEEE802.3x
	IEEE802.1q
Port Specification	10/100/1000BaseT (X) Auto
Transmission Mode	Store and Forward (full wirespeed)
Bandwidth	56Gbps
Packet Forwarding	40.32 Mpps
	Supports 9K jumbo frame transmission
MAC Address	8K
Buffer	4.1M
Transmission Distance	10 BASE-T :Cat3,4,5 UTP (≤250metre)
	100BASE-TX :Cat5 or later UTP (150metre)
	1000BASE-TX :Cat6 or later UTP (150metre)
	1000Base-SX :62.5µm /50µ,MMF(2m~550m)
	1000BASE-LX:62.5µm/50µm MM(2m~550m) or 10µm SMF(2m~5000m)
Watt	Standby Power Consumption : ≤30W;
LED Indicator	PWR:Power LED
	1-24: (Link LED=10/100/1000M / 25 26:(SFP LED)
Power Input	Built-in Power AC:100~240V 50-60Hz 1A
Operating Temperature/Humidity	-10~+55°C; 5%~90% RH Non coagulation
Storage Temperature/Humidity	-40~+75°C;5%~95% RH Non coagulation
Product size(L*W*H)	440mm x 190mm x 44.5mm / 1.6kg / 2.2kg
Installation	Rack - mount (optional machine hanger spare parts)
Lightning protection level	3KV 8/20us; IP30
Certificate	CE mark, commercial; CE/LVD EN60950; FCC Part 15 Class B; RoHS;
Warranty	Whole device for 1 year (Accessories not included)

Model No. **SW10242-GGS**
AEEE Yönetmeliğine Uygundur



8 682560 519509
made in P.R.C.

Nokta Elektronik ve Bilişim Sistemleri SAN.TİC.A.Ş.

Perpa Ticaret Merkezi A Blok Kat 2

No.1 Şişli / İstanbul / Türkiye

Tel. : +90 850 333 02 08

e-posta : nokta@noktaelektronik.net

web : www.noktaelektronik.net